

Eliminate auditory challenges created by face masks and social distancing in the classroom



With recent CDC school reopening guidance¹, many schools are considering protective masks for instructors and increased social distance in the class.

But these precautions introduce real challenges that can make learning more difficult...

Covering the face impairs communication



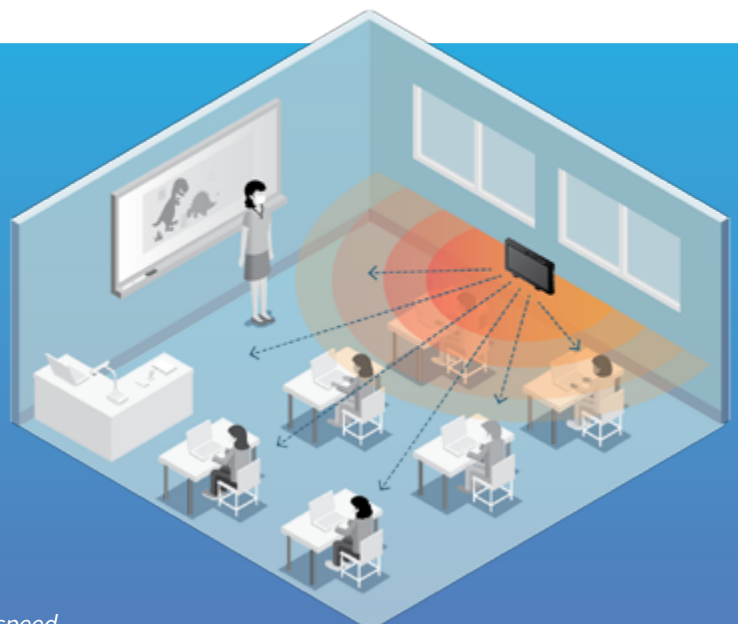
- **Loss of visual cues for comprehension:** Non-transparent masks will make it impossible for students to read teachers' lips and properly interpret facial expressions, making them entirely reliant on the teacher's voice.
- **Reduced audibility or loudness of the teacher's voice:** Masks will dampen the teacher's voice and increased social distance will make it difficult for everyone to hear.
- **Decrease in intelligibility or clarity:** [Recent studies](#) show masks reduce high frequencies by as much as 12 dB², making it extremely difficult for students to clearly understand their teachers.
- **Increase in teacher vocal strain:** Even more stress will be placed on the teacher's voice as they attempt to overcome these barriers.

Lightspeed classroom audio systems ensure clarity of speech and even sound distribution.

Lightspeed's pendant microphone combined with a Redcat, Topcat or 955 classroom audio solution overcomes the audibility and intelligibility challenges brought on by masks and social distance.

When teachers use a microphone, the audio level and quality of their voice is dramatically improved, ensuring all students can clearly and effectively hear every word.

To find the solution that works best for your classroom, contact Lightspeed at 1-800-732-8999 or visit www.lightspeed-tek.com



¹ CDC Activities and Initiatives Supporting the COVID-19 Response and the President's Plan for Opening America Up Again May 2020

² Goldin A, Weinstein BE, Shiman N. How do medical masks degrade speech perception? Hearing Review. 2020;27(5):8-9